

## AIR BEARING DICING SPINDLE RANGE

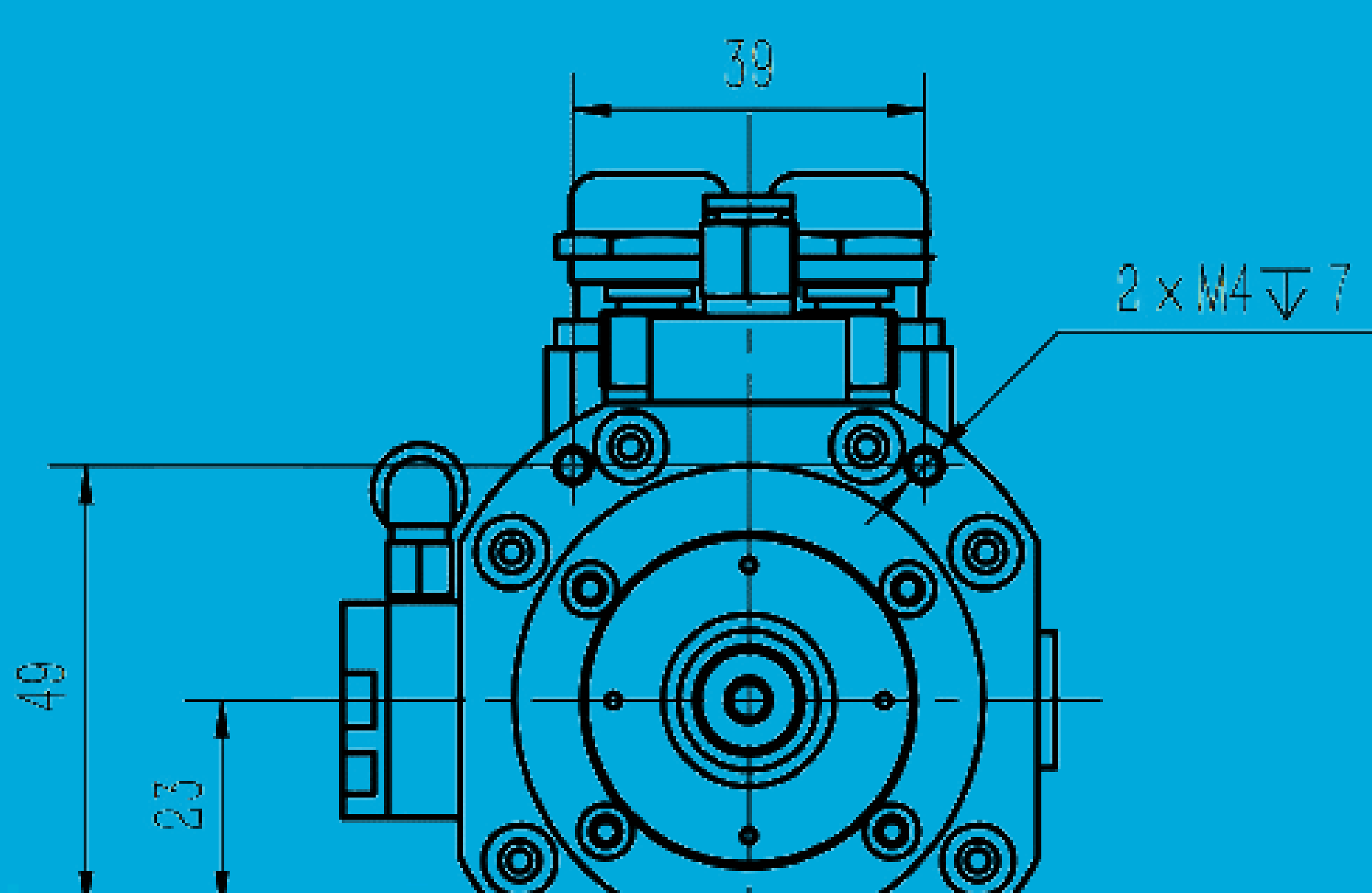
### ADS 11300

ALTERNATIVE MOUNTING  
ARRANGEMENTS AVAILABLE

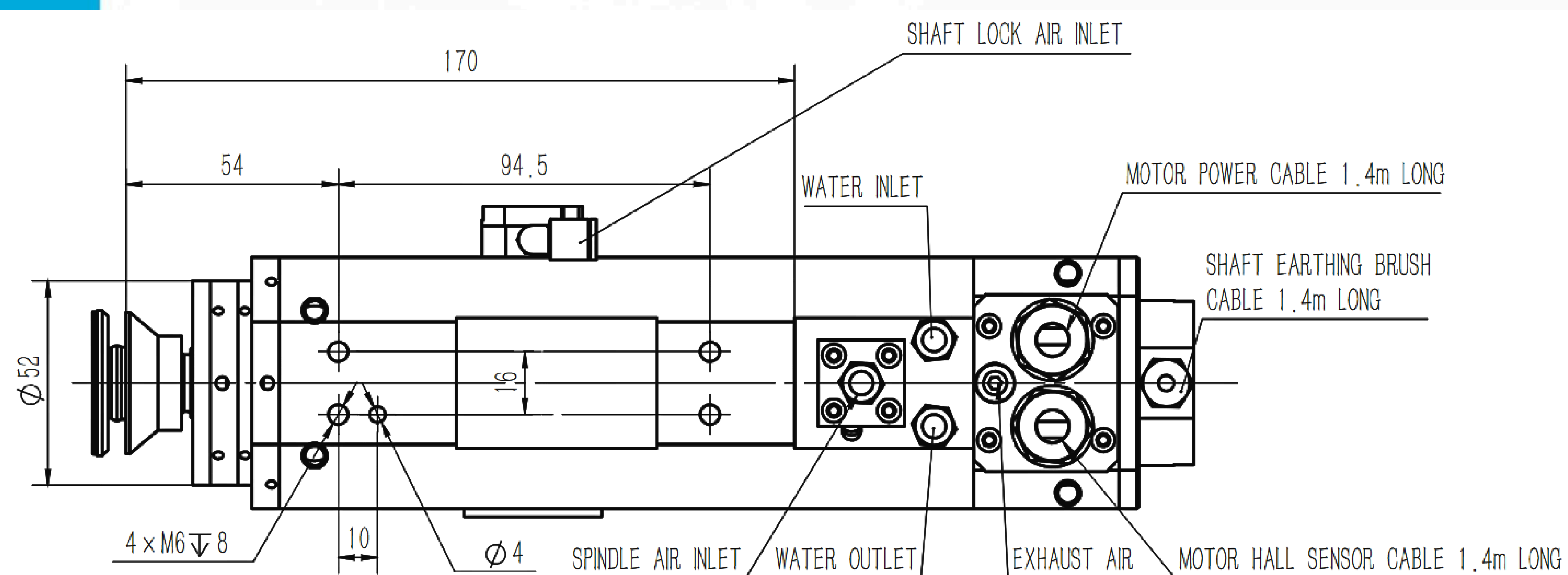
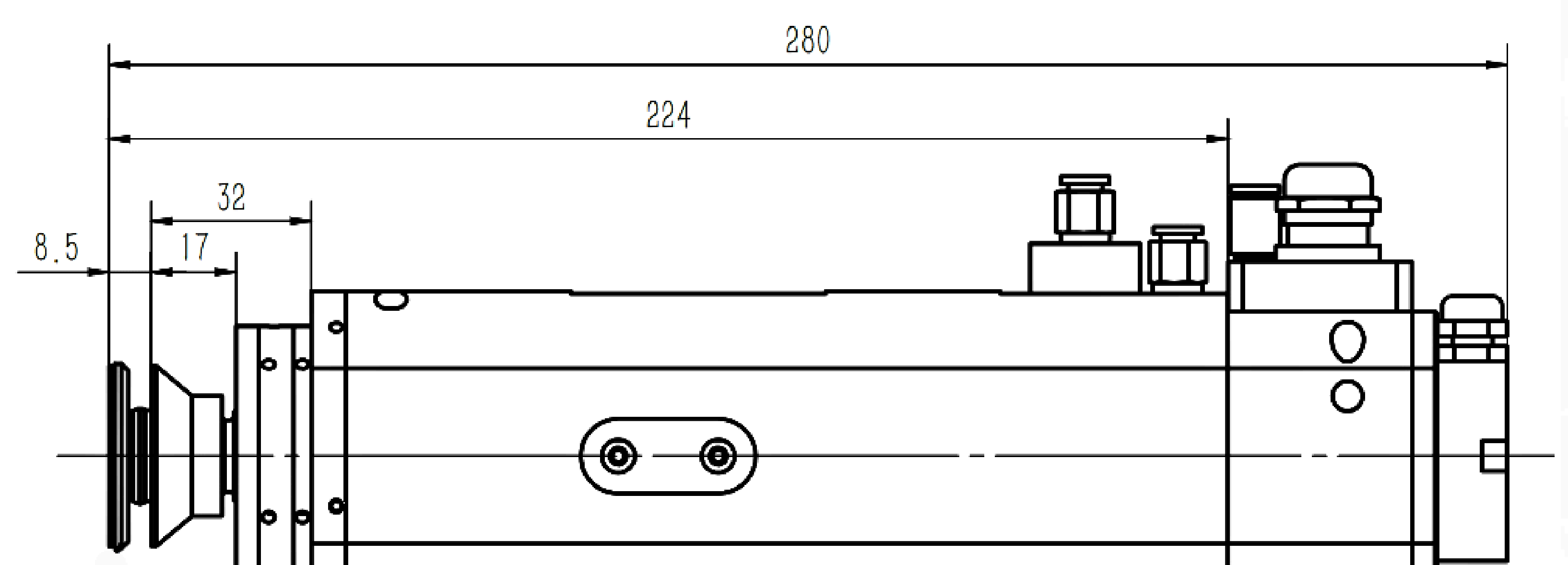
CW/CCW ROTATION AVAILABLE

#### WATER COOLING

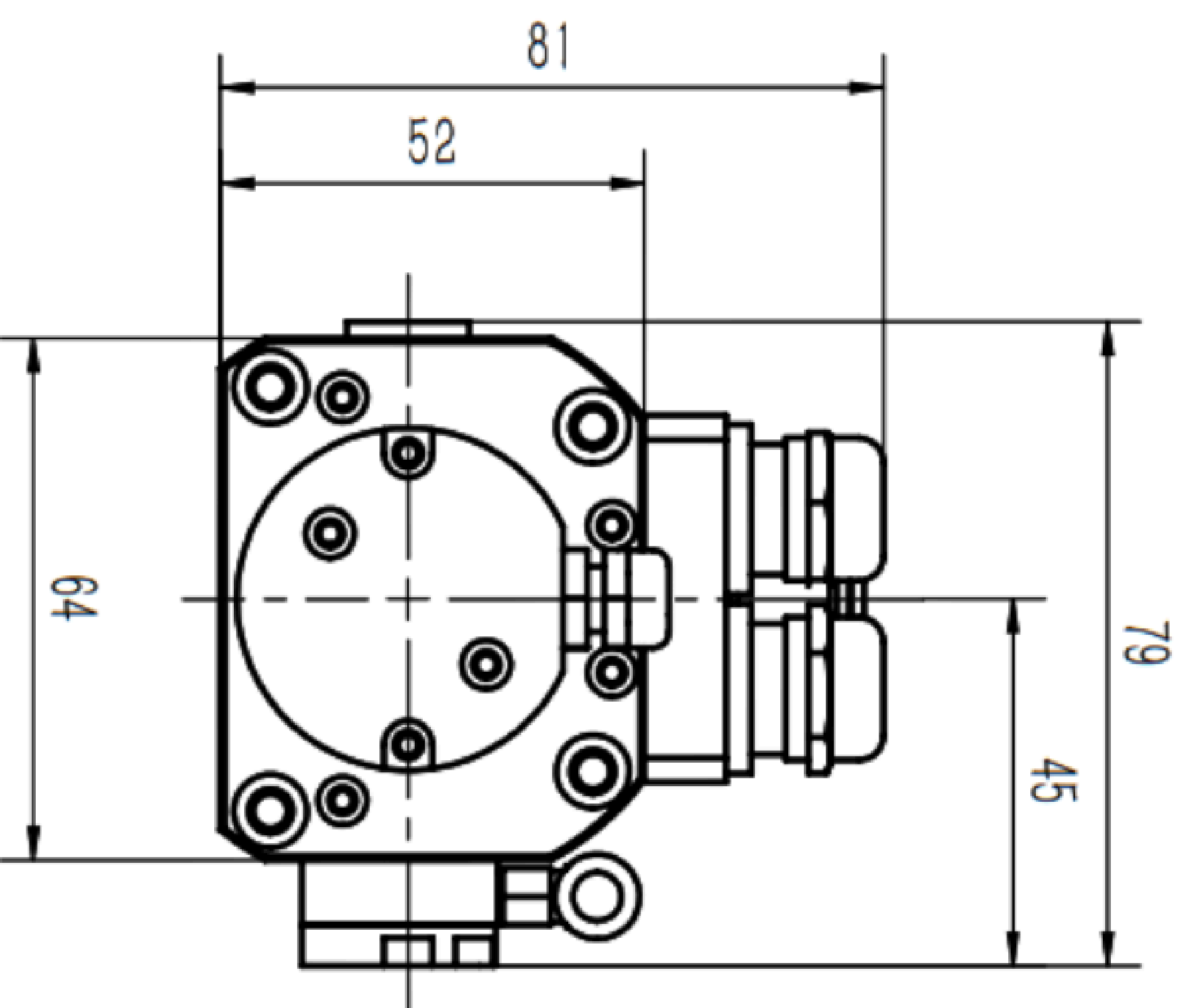
Maximum Speed	60,000 rpm
Motor Output Power	1.8 kw
Bearing Air Supply Pressure	4.5—5.5 bar
Air Consumption	60 l/min
Cooling Water Flow	2.0 l/min
Axial Stiffness	> 1 kg/um
Radial Stiffness at P (Static)	> 0.5 kg/um
Axial Load Capacity	> 12 kg
Wheelmount Axial Runout	≤ 2 um
Wheelmount Radial Runout	≤ 2 um
Electrical Supply	DC 180V
Number of Poles	6
Continuous Stall Torque	0.33 N.m
Peak Stall Torque	0.68 N.m
Spindle Noise Level	70 dB MAX
Vibration	< 0.2 mm/s



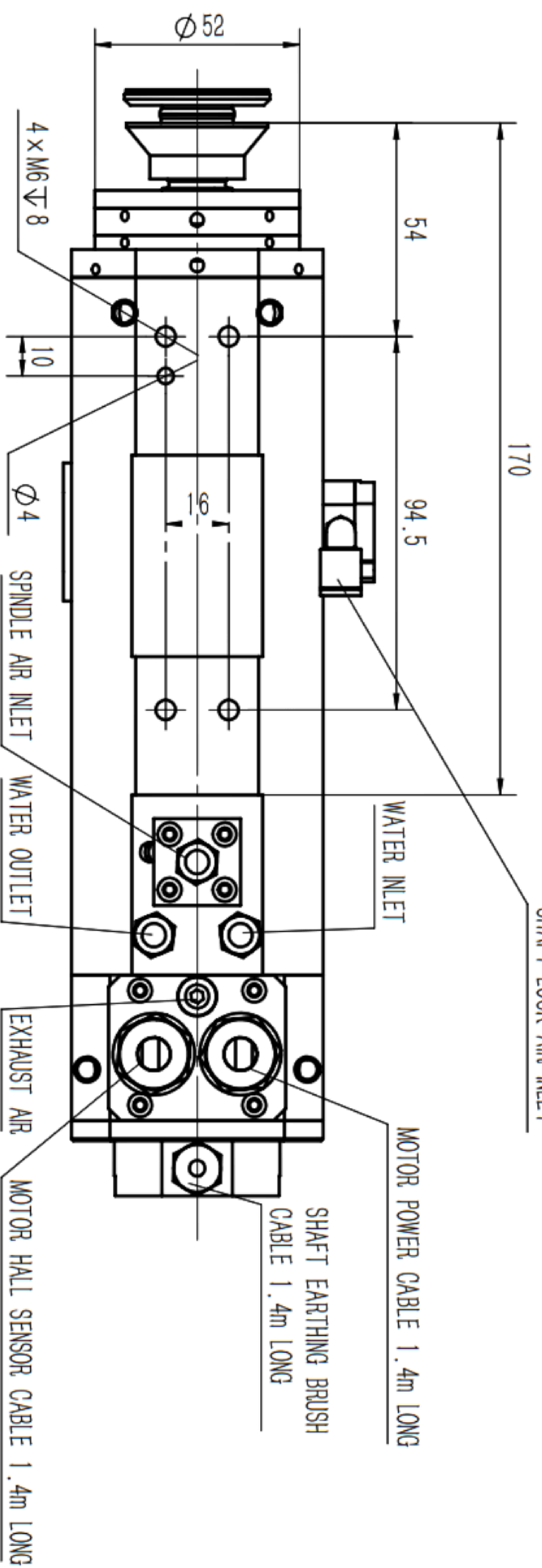
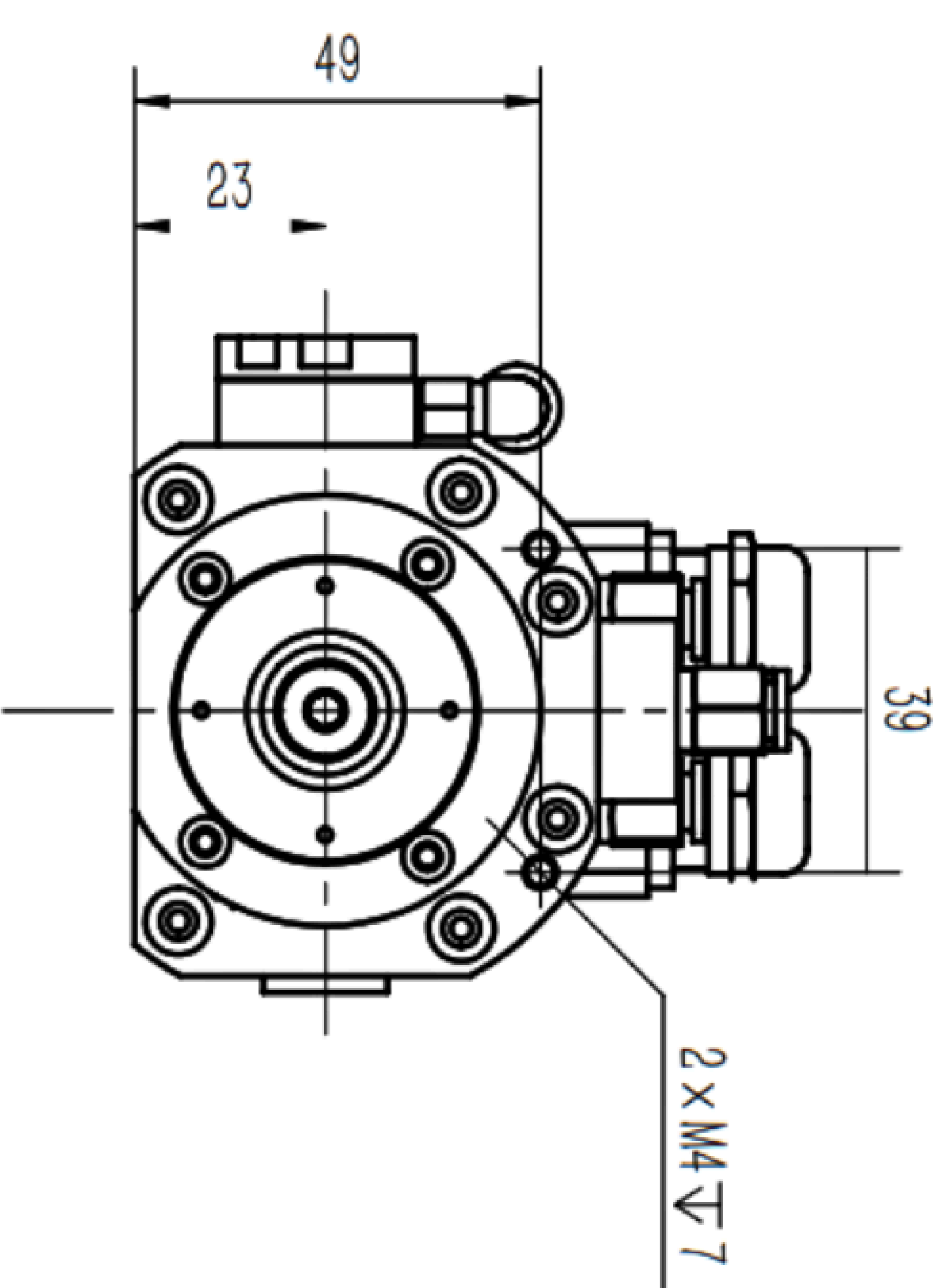
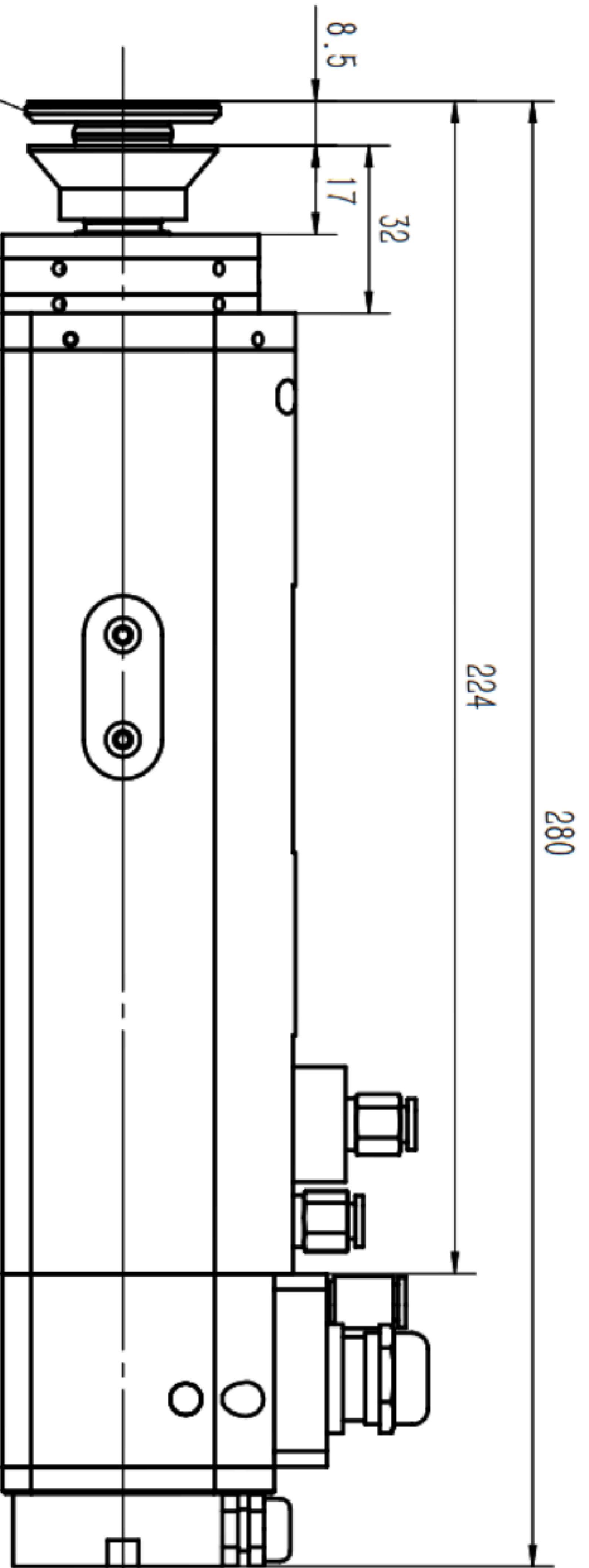
- ENHANCED THRUST SEALING**  
 PREVENTION OF EXHAUST ESCAPE  
 AND INGRESS INTO THE BEARING THRUST.
- IMPROVED CARBON DUST EXTRACTION FROM BRUSHES**  
 PREVENTION OF HALL SENSOR FAULTS CAUSED BY DUST DEPOSITS.  
 REDUCED HEAT AT THE BRUSH CONTACT POINT TO EXTEND BRUSH LIFE.
- ENHANCED MANUFACTURING TECHNIQUES**  
 REDUCED VIBRATION.  
 IMPROVED RUNOUT AT THE BLADE MOUNTING LOCATIONS.  
 ENHANCED INTERCHANGEABILITY OF WHELMOUNT.







TYPICAL WHEELMOUNT  
NUT FOR ILLUSTRATION



a	DIMENSIONS IN: ???	LIMITS UNLESS STATED		 3RD ANGLE PROJECTION	REMOVE SHARP EDGES	DRAWN: ???	MATERIAL	TITLE	DRAWING No. ADS 11300	SHEET 1 OF 1
	INCHES	MM	DATE: ???			WEIGHT (KG):				
<b>A REV DETAILS</b>										
<b>MODIFICATIONS</b>										
This drawing, all of its data and content, is intended for reference purposes to whom it was sent and is considered the intellectual property of Loadpoint Ltd. Therefore, this drawing and its content remains the property of Loadpoint Ltd indefinitely, it should under no circumstances be reproduced, shared or published in any manner, without the express written permission of Loadpoint Ltd.										



UNIT B, 6 NIMROD WAY, STIRLING BUSINESS PARK, WIMBORNE,  
DORSET, ENGLAND, BH21 7SH  
WEB: www.loadpoint.co.uk  
EMAIL: info@loadpoint.co.uk  
COPYRIGHT LOADPOINT, 2023.