

AIR BEARING LENS TURNING SPINDLE

10540

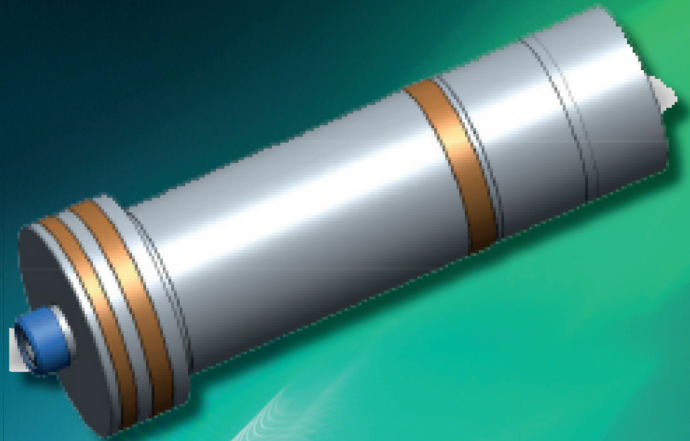
CONTACT LENS TURNING

ENCODER INTERPOLATIONS

AUTO COLLET

DYNAMIC RUNOUT SUB 20NM

Speed Range	1000—10,000 rpm
Motor Power Options	130 watts
Air Supply Pressure	5.5 bar
Bearing Air Consumption	80 l/min
Axial Failure Load	> 500 N
Radial Runout at Tool	≤ 1 μm
Motor Type	Brushless DC 12 pole
Encoder Line Count	1800 Lines
Weight (Approx)	20 kg
Body Diameter (nominal)	98 mm



KEY BENEFITS

- WITH ENCODER TECHNOLOGY TO MAXIMISE PRECISION AND SMOOTHNESS OF ROTATION. ALSO WITH A HIGHER POLE MOTOR TO REDUCE COGGING TORQUE AND IMPROVE MOTION ERROR.
- COMES WITH A FIXED BACK STOP FOR ENGAGEMENT PART POSITIONAL ACCURACY
- INTERCHANGEABLE COLLET SYSTEM. RANGE OF COLLET SIZES AVAILABLE ALLOWING MAXIMUM PRODUCTION FLEXIBILITY.
- PNEUMATIC AUTOMATIC TOOL CHANGE SYSTEM FOR RAPID COMPONENT CHANGES OR AUTOMATED ROBOT LOADING.

