

AIR BEARING LENS TURNING SPINDLE

09421

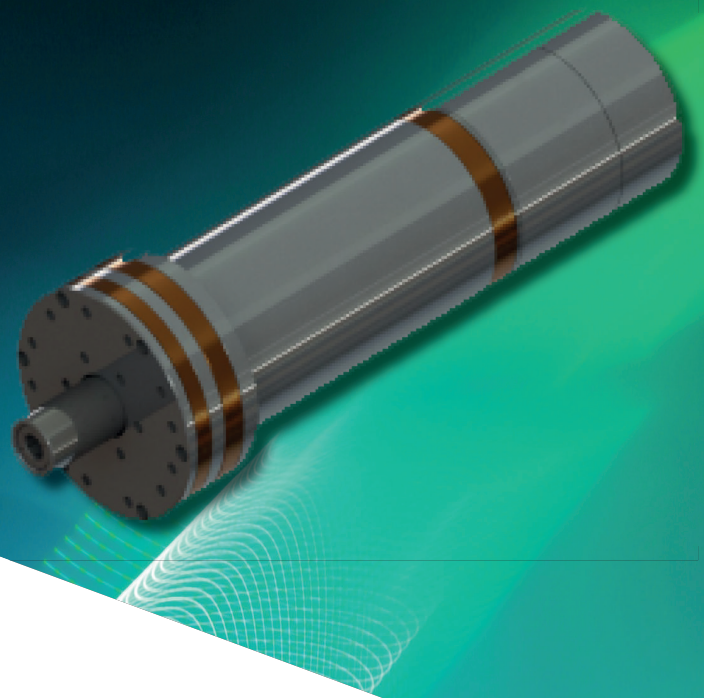
CONTACT LENS TURNING

ENCODER INTERPOLATIONS

AUTO COLLET

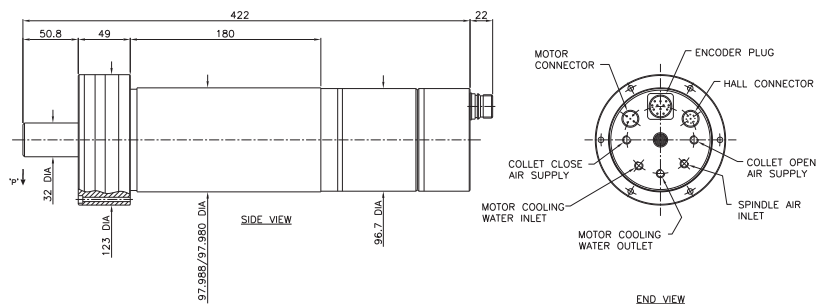
DYNAMIC RUNOUT SUB 20NM

Speed Range	1000—10,000 rpm
Motor Power Options	120 watts
Air Supply Pressure	5.5 bar
Bearing Air Consumption	75 l/min
Axial Failure Load	> 500 N
Radial Runout at Tool	≤ 1 μm
Motor Type	Brushless DC 8 pole
Encoder Line Count	1000 Lines
Weight (Approx)	20 kg
Body Diameter (nominal)	98 mm



KEY BENEFITS

- WITH ENCODER TECHNOLOGY TO MAXIMISE PRECISION AND SMOOTHNESS OF ROTATION FOR IMPROVED SPEED CONTROL AND LENS FINISH.
- INTERCHANGEABLE, COLLET SYSTEM.
- RANGE OF COLLET SIZES AVAILABLE ALLOWING MAXIMUM PRODUCTION FLEXIBILITY.
- PNEUMATIC AUTOMATIC TOOL CHANGE SYSTEM ALLOWS RAPID COMPONENT CHANGES OR AUTOMATED ROBOT LOADING.



Tel: +44 (0) 1202 894447
Web: www.loadpoint.co.uk